



TRANSAS

SETS THE STANDARD

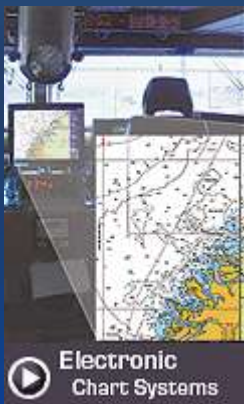


Ove A Bentsen
TRANSAS NORGE AS

TRANSAS MARITIME

● Onboard Systems

- Electronic chart system
- Integrated navigation system
- Automatic Identification System
- Voyage Data Recorder



TRANSAS MARITIME

● Onboard Systems

● Simulation Systems



- Navigational simulator (Navi-Trainer Professional)
- GMDSS Simulator (TGS)
- Engine Room Simulator (ERS 4000)
- Refrigeration Plant Simulator (RPS)
- Liquid Cargo Handling Simulator (LCHS 4000)
- Crude Oil and Product Terminal
- Potential Incident Simulation, Control and Evaluation System (PISCES II)
- Integrated water survey simulator (Hydro-Trainer)

TRANSAS MARITIME

- Onboard Systems
- Simulation Systems
- Vessel Traffic Service
 - Coastal Surveillance System
 - AIS Network solutions
 - Crisis Management System (CMS)
 - Offshore Surveillance Electronic chart system



▶ VTMS



▶ Navi-Monitor
VTS



▶ Vessel
Monitoring



▶ AIS



▶ Crisis
Management



▶ Offshore
Surveillance

TRANSAS AVIATION

● Onboard Systems



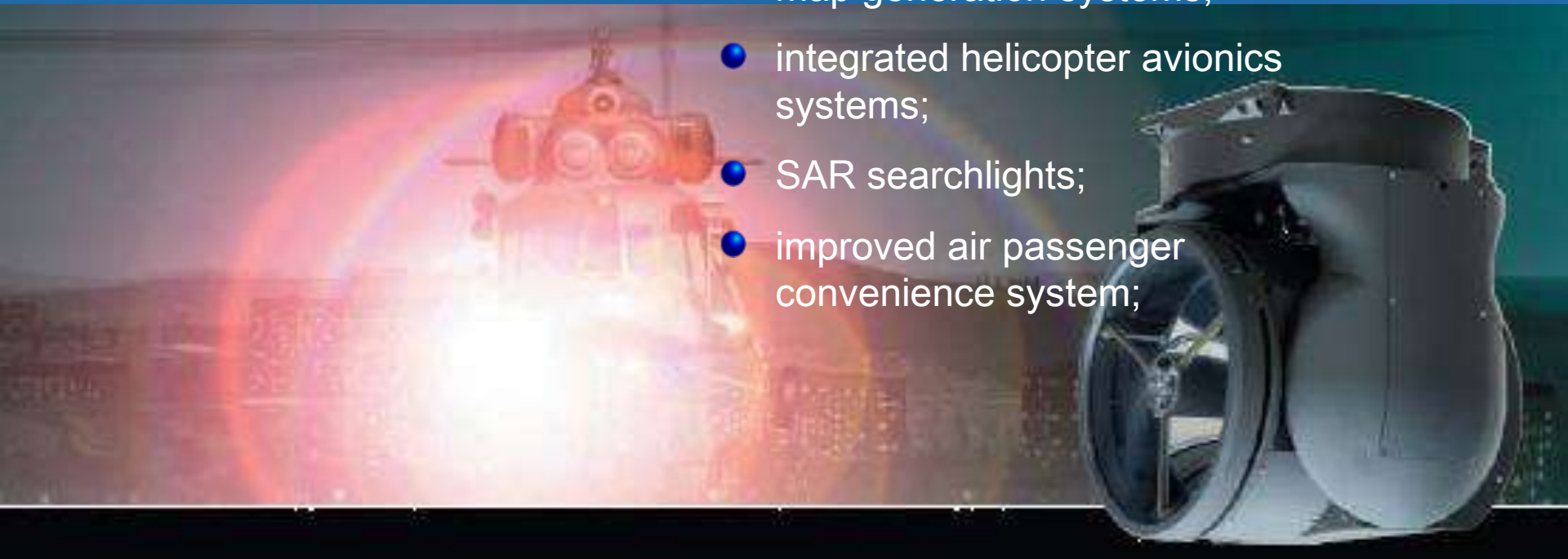
- multifunctional displays;
- radio systems;
- terrain awareness and warning systems;
- flight management systems;
- map generation systems;
- integrated helicopter avionics systems;
- SAR searchlights;
- improved air passenger convenience system;



TRANSAS AVIATION

● Onboard Systems

- multifunctional displays;
- radio systems;
- terrain awareness and warning systems;
- flight management systems;
- map generation systems;
- integrated helicopter avionics systems;
- SAR searchlights;
- improved air passenger convenience system;



TRANSAS AVIATION

- Onboard Systems
- Flight Simulators
- simulators for airplane and helicopter crew training;
- “Aurora” software complex for simulator visual systems;



TRANSAS AVIATION

- Onboard Systems
- Flight Simulators
- Aeronautical Support
 - aeronautical and topographic electronic maps;
 - digital elevation models;
 - databases for the company's aeronautical system.



TRANSAS CONSTRUCTION

- Architectural design,
- Structural design
- Special part of the project development
- General planner functions



TRANSAS TELEMATIC

- **Fleet view online**
a simple but highly functional Internet asset tracking solution.
- **Ship Guard SSAS**
a Ship Security Alert System meeting all requirements of the ISPS Code in a simple lightweight package.
- **Navi-Manager**
Complete software package for fleet management operations



High Technologies for Education and Entertainment

TRANS- -FORCE

[english](#) | [russian](#)

[IAAPA 2007](#)

[Interactive Theatre](#)

[Programs](#)

[Simulator](#)

[Better than 4D Theatre](#)

[How to find at IAAPA 2007](#)

[News](#)

[Complex](#)

[Programs](#)

[Shuttles](#)

[Restaurant](#)

[Unique Technology](#)

[Commercial Proposal](#)

[Transas Group](#)

[Trans-Force territory](#)

Trans-Force
Copyright © 2004–2007

[mail.ru](#) 6124

"Edutainment"



[Main](#) → [IAAPA 2007](#) → Better than 4D Theatre

Better than 4D Theatre

The difference between Trans-Force and 3D/4D theatres

To summarise - a Trans-Force complex is a unique fusion of movie and game technologies. It provides complete interactivity with the virtual world and combines the cravings which are felt for the modern computer-game with the feelings of excitement that can only be felt in a modern movie theatre equipped with the latest techniques: panoramic visualization on a huge screen, Dolby Surround sound system, and various special effects (vibration, light, etc.), where each and every sense is bombarded with adrenalin. Trans-Force is both an interactive movie, where the audience can



Photo taken from outside the ship



Interactivity with the virtual world



THE TRANSAS GROUP

- ± 1 300 ansatte
- 10 HUBs
- Representert i over 110 land



Transas Norge. Verftsporten, Horten



Central Office, St. Petersburg, Russia



International Transas Headquarters. Cork, Ireland

- ± 280 simulatorer levert
- 12 ingeniører ansatt i St Petersburg
- Ca 155 personer fast tilknyttet Transas Simulation
- 3 nye full mission simulatorer i Skandinavia
- Ny Peugeot i Transas Norge



Peugeot 306, 1994



Peugeot 307, 2007

OPPGRADERING ELLER NY-ANSKAFFELSE ?

CHALMERS



- Åpnet Februar
- 2 Full Mission class A broer, 270° og 2
- Transas Integreert Navigasjons System (
- Utbyttbare konsoller



NYTT I TRANSAS SIMULATION





Finnmark fylkeskommune

Finnmárkku fylkkagiielda

Nordkapp maritime fagskole og videregående skole



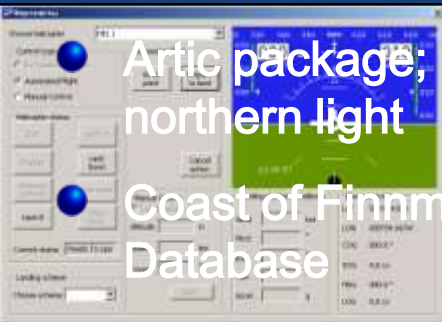
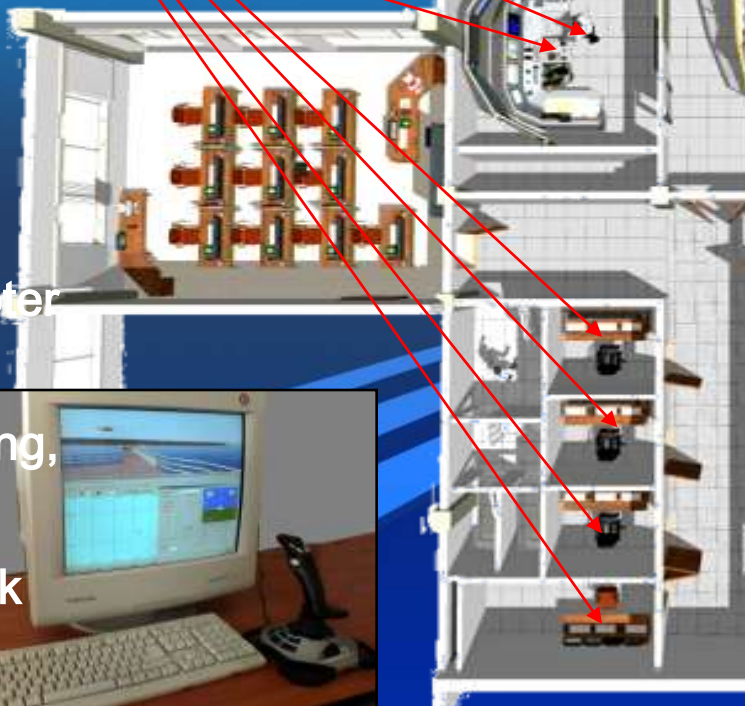
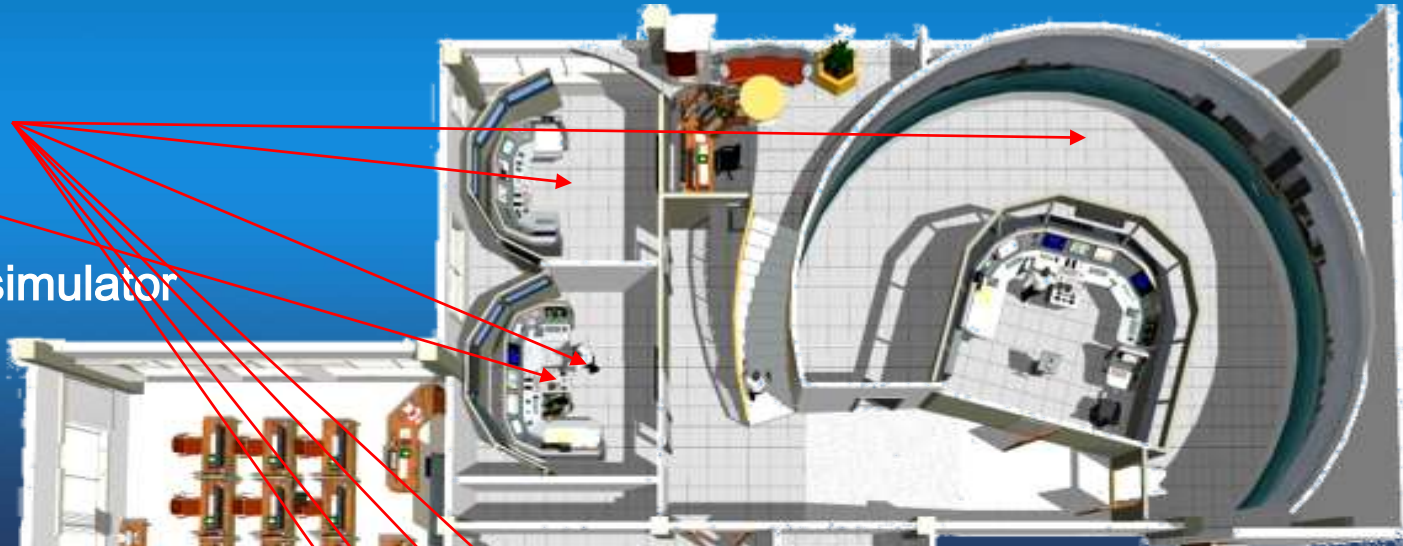
NYTT I TRANSAS SIMULATION



Finnmark fylkeskommune
Finnmárkku fylkkagiielda

Nordkapp maritime fagskole og videregående skole

- 500 m²
- 7 visual bridges
- DP simulator
- Integrated CRM simulator
- GMDSS
- De-briefing
- VTS simulator
- Simplified helicopter simulator



● Artic package; icing, northern light

● Coast of Finnmark Database

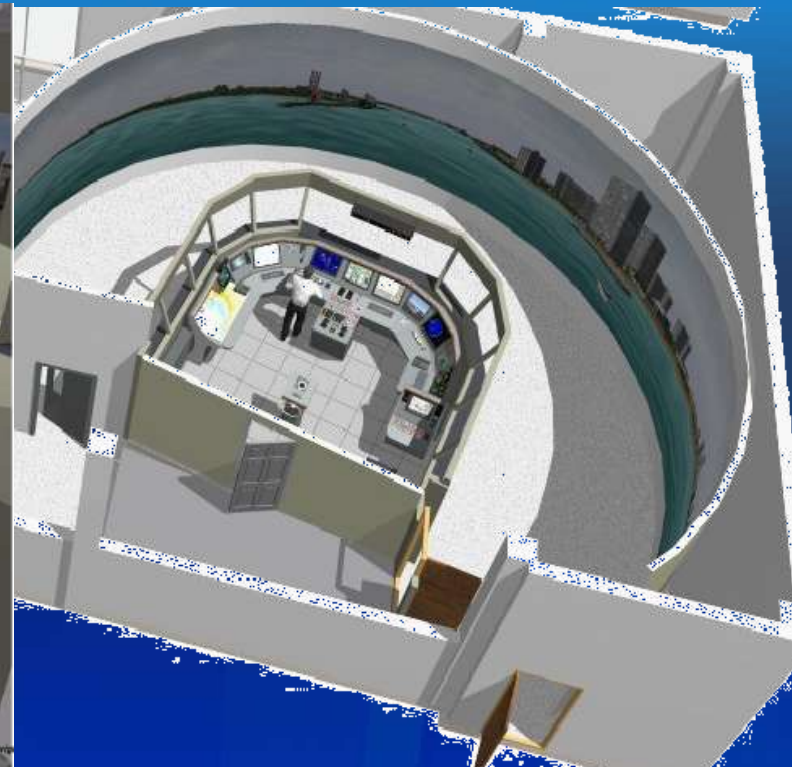
NYTT I TRANSAS SIMULATION



Finnmark fylkeskommune
Finnmárkkku fylkkagiielda

Nordkapp maritime fagskole og videregående skole

- DNV Class A fast craft bridge
- >300° horizontal view, projectors
- Configurable to different types of ship
- Real instrumentation



NYTT I TRANSAS SIMULATION



Finnmark fylkeskommune
Finnmárkku fylkkagielda

Nordkapp maritime fagskole og videregående skole

● 2 x DNV Class B bridges w/DP2 function

- Configurable to different ship types
- >200° horizontal view, 50" plasmas
- Real instruments and extended view on DP



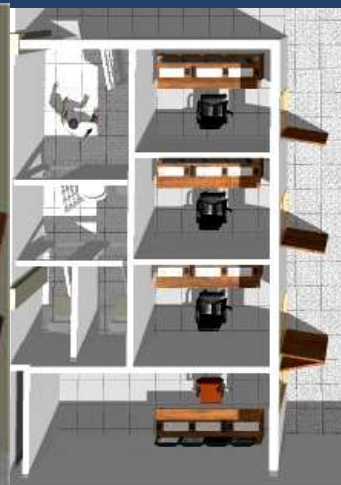


Finnmark fylkeskommune
Finnmárkku fylkkagiielda

Nordkapp maritime fagskole og videregående skole

● 4 x trainee bridges

- Configurable to different vessels
- 45 degrees monitor channel view
- Full GMDSS class-mode
- Soft-ware instruments





Finnmark fylkeskommune
Finnmárkkku fylkkagielda

Nordkapp maritime fagskole og videregående skole

● Multi functional class room

- Fully operational GMDSS laboratory
- 10 x GMDSS simulator trainee workstations
- Instructor station





Finnmark fylkeskommune
Finnmárkku fylkkagielda

Nordkapp maritime fagskole og videregående skole

● CRM simulator

- Oil spillage
- Toxic smoke
- Coastal fire
- Etc.

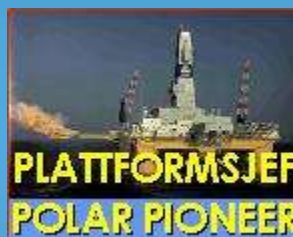


NYTT I TRANSAS SIMULATION



Finnmark fylkeskommune
Finnmárkkku fylkkagielda

Nordkapp maritime fagskole og videregående skole



Participants CRM Training



NYTT I TRANSAS SIMULATION



Finnmark fylkeskommune

Finnmárkkku fylkkagielda

Nordkapp maritime fagskole og videregående skole

Prepered for converting the simulator to a visual safari experience





TRANSAS

SETS THE STANDARD

www.transas.com