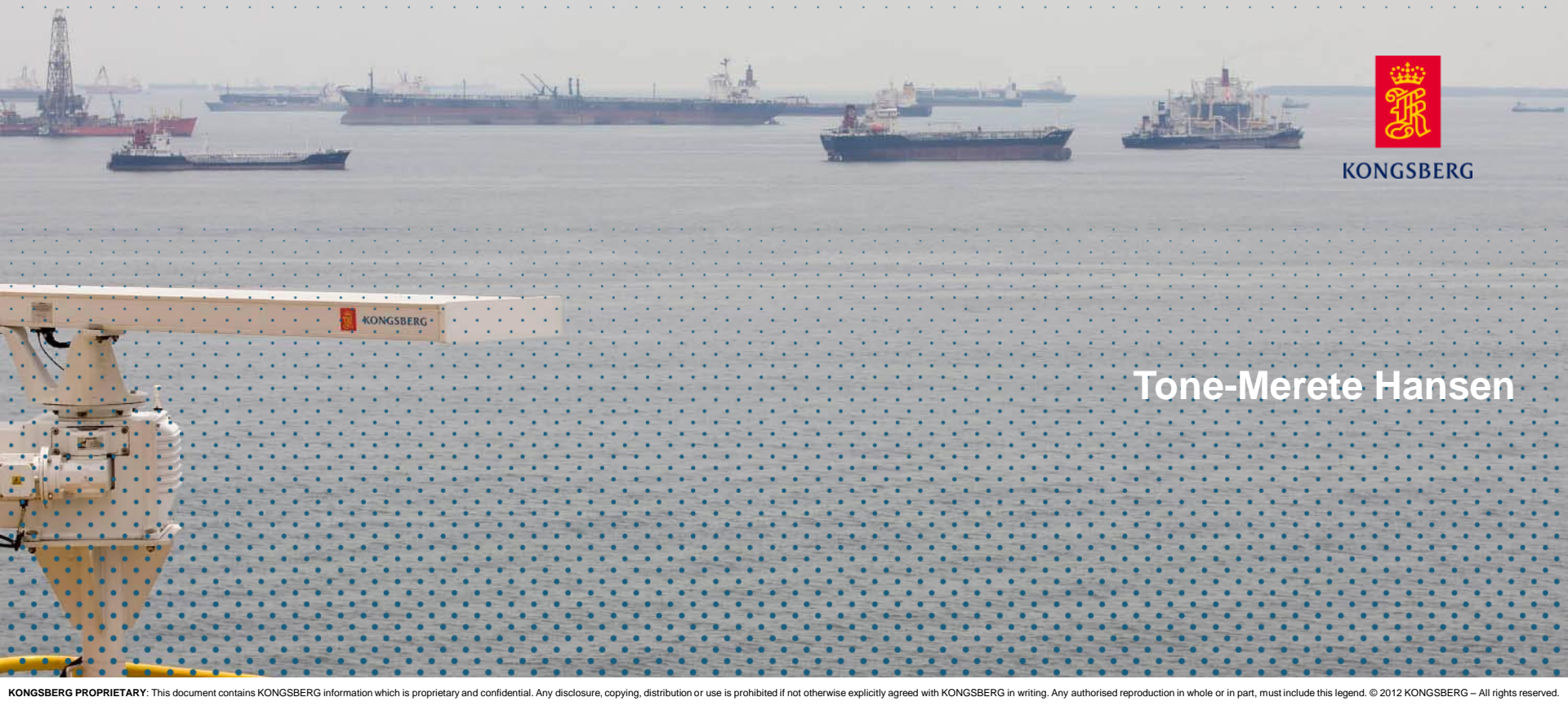


MUF 2012

Kongsberg Maritime Simulation



KONGSBERG

Tone-Merete Hansen



News from Kongsberg

- Continuous improvements based on customer inputs (LTSSP)
- DNV 2.14 2011
- Customer requests/paid development
- Increased focus on offshore training-competence-operations
- Virtuelle norskekysten
- Working on certification “train the trainer” type specific ECDIS courses
- New Vice President Simulation
- Simulation & Training

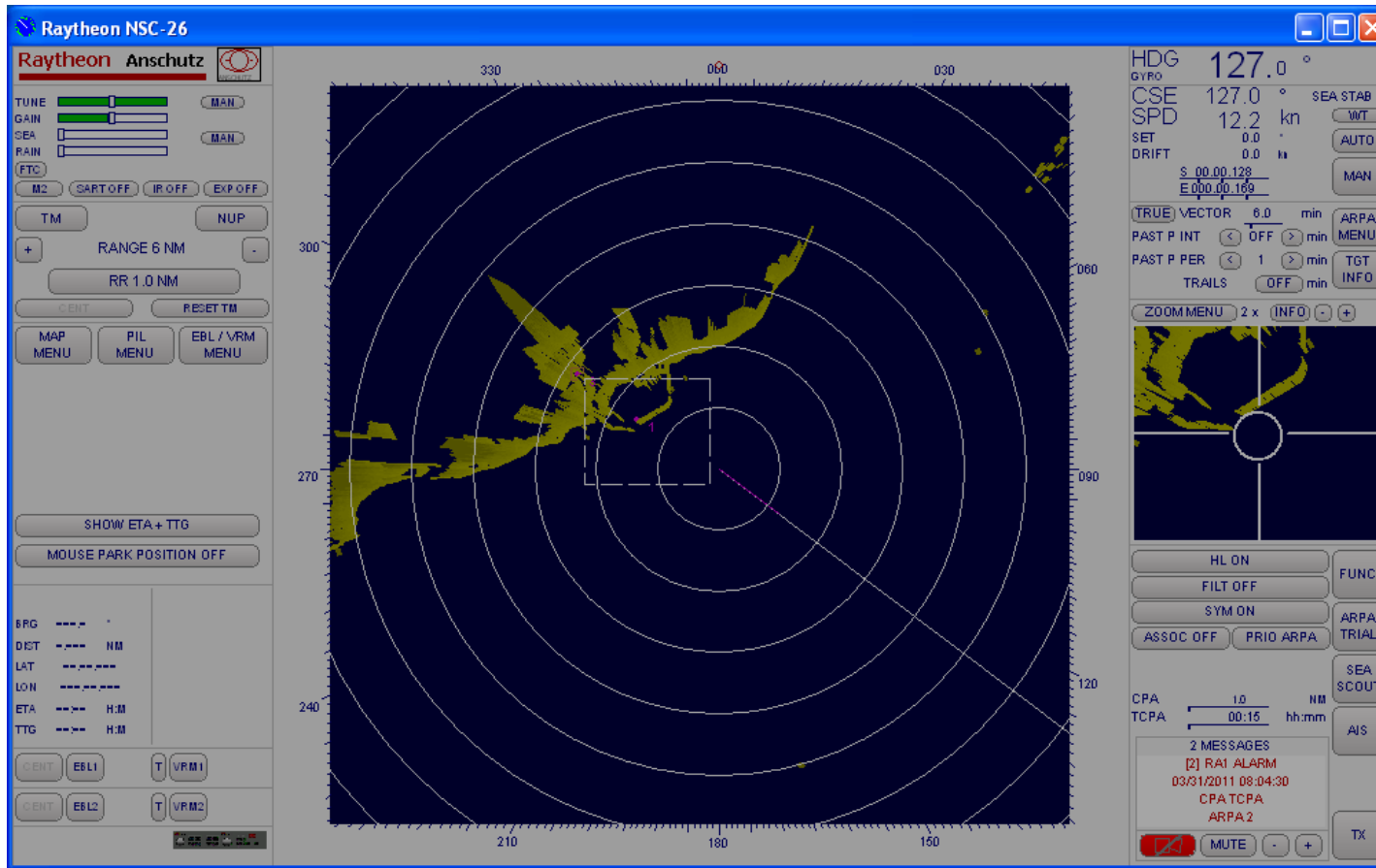
Polaris

New release 7.1.1 & 7.2.0



KONGSBERG

Raytheon NSC 26 Emulated radar Display



New tracker functionality: zoom, zone, sea scout

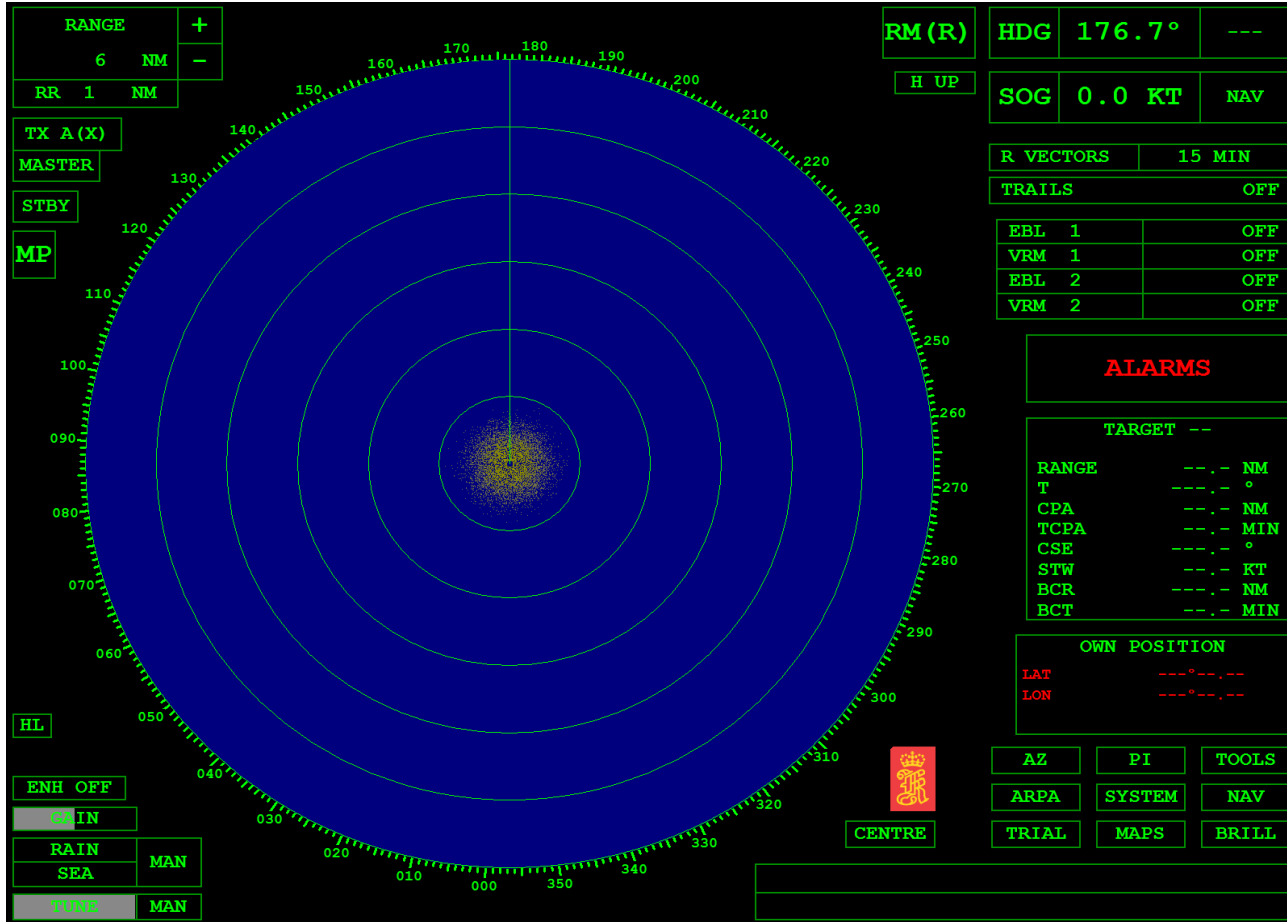
Dedicated hardware panel

Can also be delivered with software panel

Radar Sperry Bridgemaster E



KONGSBERG



Radar - Ownship 1

Main | Characteristics | Sectors | Emulated Radar/ARPA Display

Parameters

- Automatic Power-On (whenever electric power available)
- Automatic Standby-to-Run (at startup/new exercise)
- Automatic Gyro Alignment (at startup/new exercise)
- Automatic Lat/Lon Initialisation (at startup/new exercise, for Dead-Reck.)

For the Polaris Radar/ARPA Display ONLY:

- ARPA Functions (Automatic Radar Plotting Aid)
- AIS Functions (Automatic Identification System)
- Integrated Navigation (Data Sailing)

Bridge: Main

Using Emulated Radar Display: Raytheon NSC-18, Raytheon NSC-18, Raytheon NSC-26, Sperry BridgeMaster E

NOTE: Not all parameters valid for all types of Emulated Radar/ARPA Displays!



Interface of real radar displays not supporting analogue input.

- The real radar Furuno FAR 2187 is interfaced to the simulator by use of the new hardware board from scanfaker.
- This new radar interface support new real radars with internal communication between display and scanner. Radars where transceiver and receiver are located in the antenna.





Even better visual: Seaview

- New release of open scene graph
- Split treading for loading process
- Moon reflection
- Program argument doc
- Ship and target generated bow waves
- Cloud textures 6 new types



Flapping Flag & Flue gas emission as part of DNV-A 2011 revision



KONGSBERG



Kongsberg Offshore Vessel Simulator

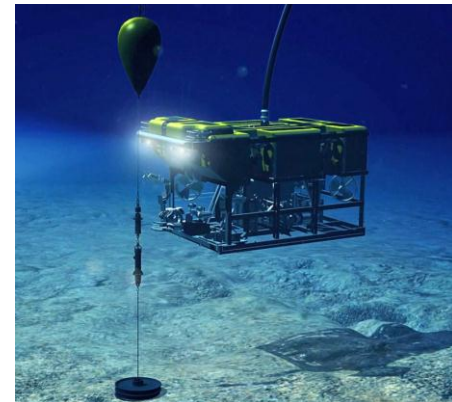
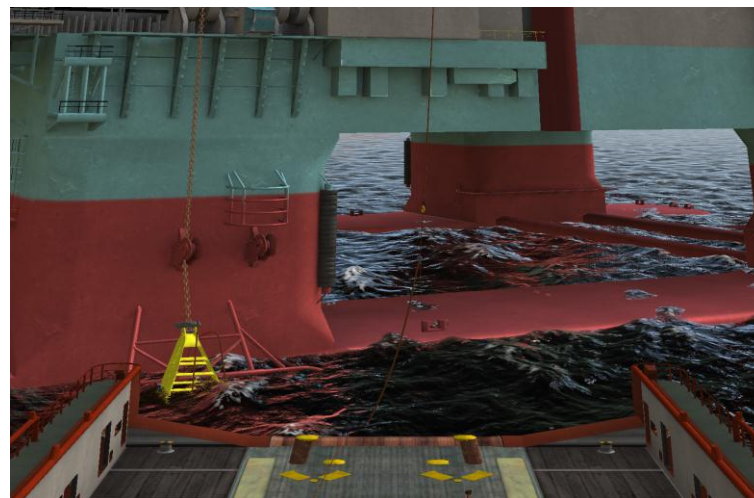
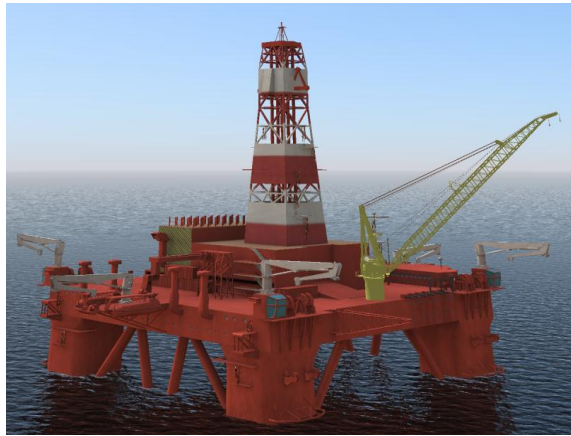
Adding functionality & improving base



KONGSBERG



- Tugging
- Offshore crane
- Anchor handling tug supply
- Tandem Loading (bøyelasting)
- Seismic crew
- A-Frame crane
- Jack-up rig
- ROV simulator
- DP
- Oil containment trainer
- Wind mill installation



Neptune Engine room simulator

Increased flexibility, new models, visualization



KONGSBERG



KONGSBERG

Kongsberg ERS Installation



- Standard Product.
- Flexible
 - 5 models released on new hardware
 - More to come
- Cost effective



KONGSBERG

Virtual Engine Room on Desktop.



MAN VLCC B&W MC 90-V

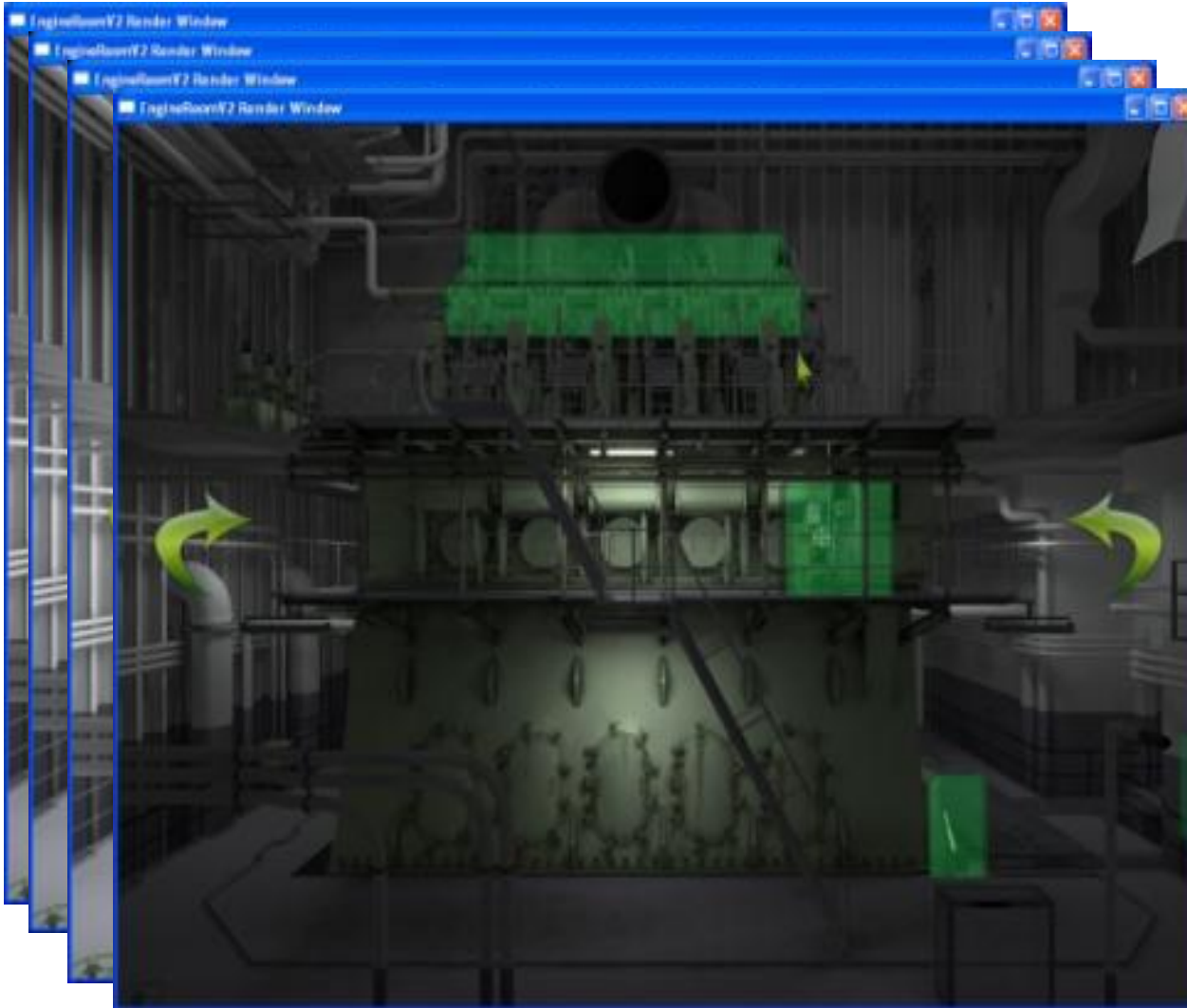
- Diesel Generator 1 & 2 Wärstila 6L20
- Main Engine MC90 5L
- HFO Separator 1 and 2

Diesel Electric Cruise Model DE III

- Diesel generator 1,2,3,4 Wärtsilä 46 V12



3D Visual in Big View Software



1. Normal state
2. Fire indication
3. Watermist release
4. Blackout

kongsberg.com



KONSGBERG