

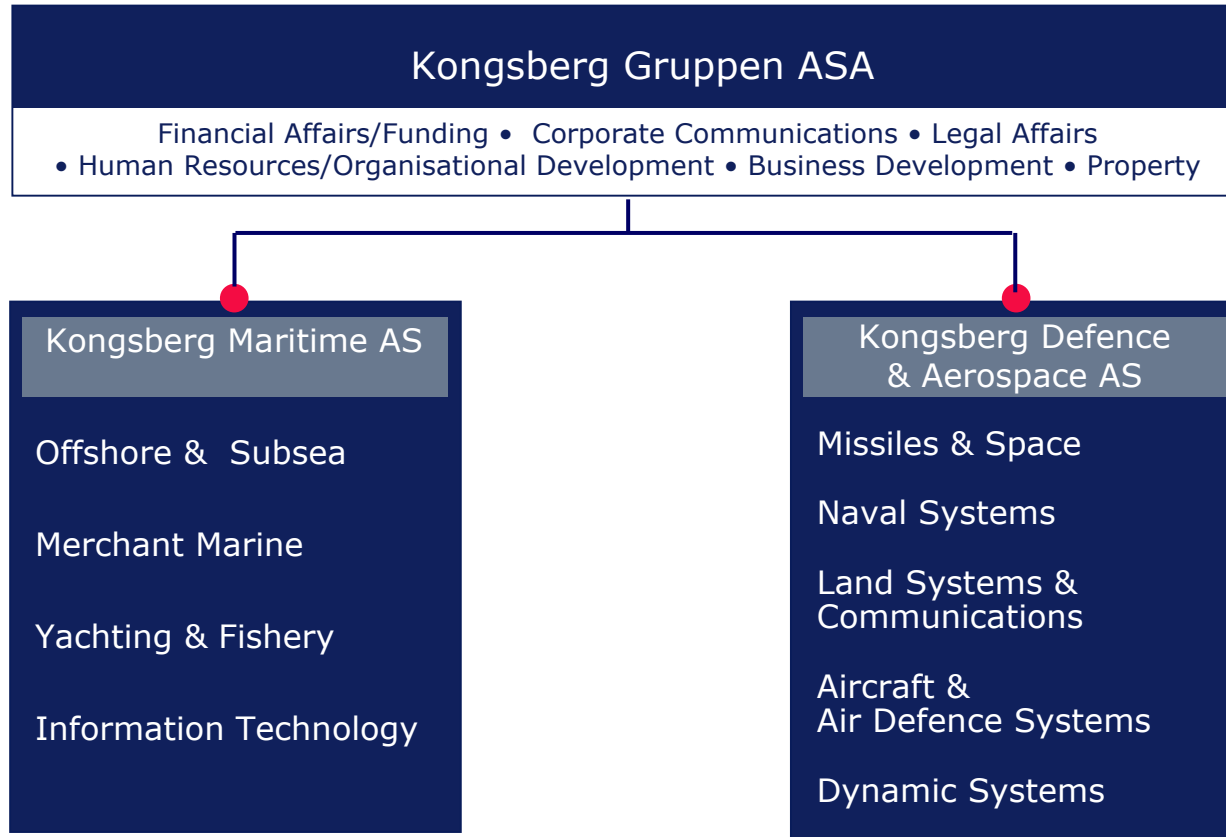


KONGSBERG

WORLD CLASS – through people, technology and dedication



Business structure



Marine Electronics is our business



KONGSBERG

- Dynamic positioning
- Marine automation
- Navigation
- Hydro acoustics
- Simulation
- Communication
- Information processing

Information Technology
Kongsberg Marine IT



Offshore & Subsea
Kongsberg Maritime
(KS)



Merchant Marine
Kongsberg Maritime
(KMSS & Autronica)



Yachting & Fishery
Simrad





FleetMaster Electronic LogBooks for Bridge/engine Simulators

- Solas V Electronic Logbooks. Flagstates acceptance.
- Fast entry of events – easy to use.
- Network based Logbook Training.
- Easy to take printouts of different reports – Training history.
- For evaluation purpose, individual monitoring of activities on bridge.
- GPS NMEA interface to simulator.



FleetMaster deck log book. Local time: 14:09(UTC=14:09). Duty navigator is Urban, Olsen - Marine IT Company

File View Insert Voyage Cargo Tools Reports Help

Port Operation | Draft | Draft Details | GO

Time	Event	Description	Logged by
12:47	Weather observation	Weather observations	MN
11:59	Fixes and bearings	Fix position: 00° 00,0 N - 000° 00,0 E Bearing: test Check point:	MN
14:58	Fixes and bearings	Fix position: 57° 27,91 N - 010° 33,17 E Bearing: test Check point: - Delete reason : wrong GPS	MN ADM
09:42	Navigation observation		MN
09:41	Navigation observation	Steering to pilot's advice and captain's command	MN
09:31	Fixes and bearings	Fix position: 57° 27,91 N - 010° 33,17 E Bearing: Check point:	MN
09:31	Navigation observation	Steering to captain's command	MN

Time	Event	Description	Logged by
14:57	Watch change	Freddy Ragnar Base off duty. Olsen Urban on duty.	MN
13:58	Well data	Well data	MN
13:58	Well data	Well data	MN
13:46	Engine revolution	Engine Revolutions	MN
13:05	Light check	Light check carried out	MN
12:43	General note	This is a general remark	MN
11:29	Reckoning	Reckoning - Length of day is 24 hours 0 minutes	MN
14:05	General	This is a test note. Once again we are testing the possibility to insert a note of an EXTREME length. Perhaps this is a place we can inspire people to	MN

18. Sep 2003



FleetMaster Electronic LogBooks screen shot

FleetMaster deck log book. Local time: 14:09(UTC=14:09). Duty navigator is Urban, Olsen - Marine IT Company

File View Insert Voyage Cargo Tools Reports Help

Port Operation Draft Draft Details GO

1. Visual inspection of engine light control unit 2. Lock out coil and solenoid 3. P the responsibility control unit 4. Other engine/propeller/berth/hold of in position

1	2	3	4	5	6	7	8	9	10	11	12	13	14	15	16	17	18	19	20	21	22	23	24
0000																							
0100																							
0200																							
0300																							
0400																							

Time	Event	Description	Logged by
12:47	Weather observation	Weather observations	MN
11:59	Fixes and bearings	Fix position: 00° 00.0 N - 000° 00.0 E Bearing: test Check point:	MN
11:58	Fixes and bearings	Fix position: 57° 27.91 N - 010° 33.17 E Bearing: test Check point:	MN
		Delete reason : wrong GPS	ADM
09:42	Navigation observation		MN
09:41	Navigation observation	Steering to pilot's advice and captain's command	MN
09:31	Fixes and bearings	Fix position: 57° 27.91 N - 010° 33.17 E Bearing: Check point:	MN
09:31	Navigation observation	Steering to captain's command	MN

2. Soundings of engine (oil pressure, pulse and turbo at)

1	2	3	4	5	6	7	8	9	10	11	12	13	14	15	16	17	18	19	20	21	22	23	24

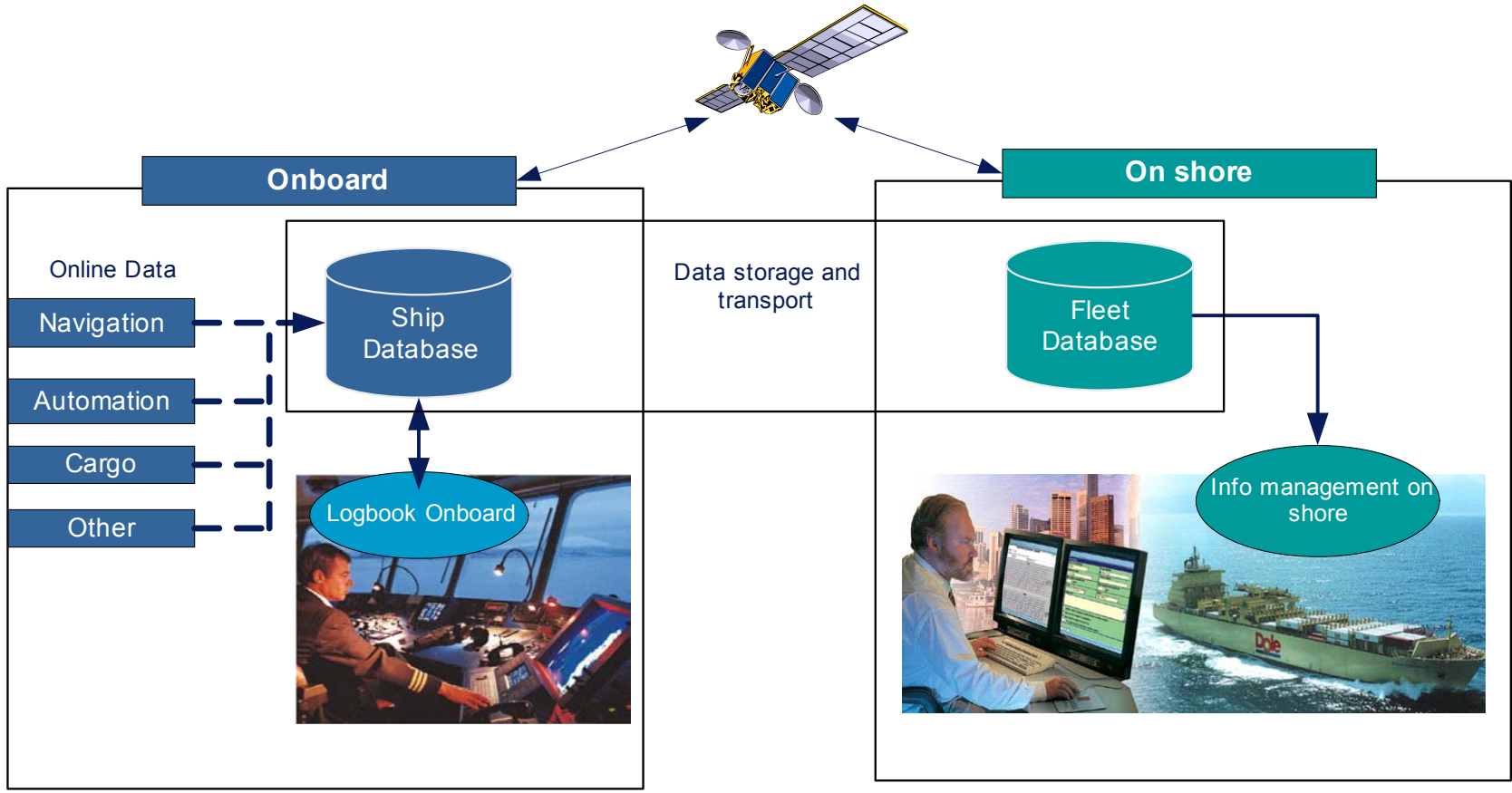
23. Microtime set (01, 02, 03, 04, 05, 06, 07, 08, 09, 10, 11, 12, 13, 14, 15, 16, 17, 18, 19, 20, 21, 22, 23, 24)

Time	Event	Description	Logged by
14:57	Watch change	Freddy Ragnar Bøe off duty. Olsen Urban on duty.	MN
13:58	Well data	Well data	MN
13:58	Well data	Well data	MN
13:46	Engine revolution	Engine Revolutions	MN
13:05	Light check	Light check carried out	MN
12:43	General note	This is a general remark	MN
11:29	Reckoning	Reckoning - Length of day is 24 hours 0 minutes	MN
11:25	General	This is a test note. Once again we are testing the possibility to insert a note of an EXTREME length. Perhaps this is a place we can inspire people to	MN

18. Sep 2003



FleetMaster Design





Fleet Data Manager – Daily noon reporting

Fleet Data Manager - Microsoft Internet Explorer

Select fleet type:
-- All ships --

Select ship:

Ship Name	Status
Ocean Sky	
Geo Sea	

Ocean Sky Status: Data is 12 days old!

Voyage Info

From: Bergen To: Kristiansund
ETD: 8. May 2003 15:45
ETA: 10. May 2003 09:00

Latest status

Time: 7. May 2003 14:25 (UTC) 7. May 2003 14:25 (Local)
Position: Lat by obs: - None - Long by obs: - None -
Speed / RPM: -- None--

Latest Notes

Time	Entered by	Description
10:16	Nerhus,Morten	Startet å bunkre diesel
14:57	Nerhus,Morten	Standby v/Draugen POB-140
16:00	Nerhus,Morten	Nærstandby. Arbeid i flammebom. 4 mann
17:10	Nerhus,Morten	Nedvasking av innredning, vasket slepebåt. Malte ferdig fundament til oljelense.

Ocean Sky

Vessel's Particulars



KONGSBERG

Fleet Manager – ship tracking

Select fleet type:
-- All ships --

Menu bar
General Status | Deck Log | Engine Log | Oil Log I | Ship Tracker | Exit

Select ship:

Ship Name	Status
Berge Danuta	●
Berge Clipper	●

Berge Danuta

Vessel's Particulars

- General Info
- Deck Logs
- Engine Logs
- Oil Logs (Part I)
- DP Logs
- Position History

How comes?

Bergesen dy asa



KONGSBERG

Captain Johnny Berentsen - Master onboard Berge Clipper, pilot user for 8 months



We are very positive to run the Electronic version only. As said above, all others officers onboard are also positive to this technological step in the right direction. The common attitude onboard is: “We look forward to throwing out the old paper log book”



How comes? Sartor Shipping as



KONGSBERG

President Karsten Høyland, Sartor, pilot user for 6 months

“The Electronic Logbook is an efficient way of recording and reporting navigational information. We have also developed customised reports that we use towards principal charterers, this saves us both time and money. Additionally the quality of reporting is substantially improved.





KONGSBERG

WORLD CLASS – through people, technology and dedication